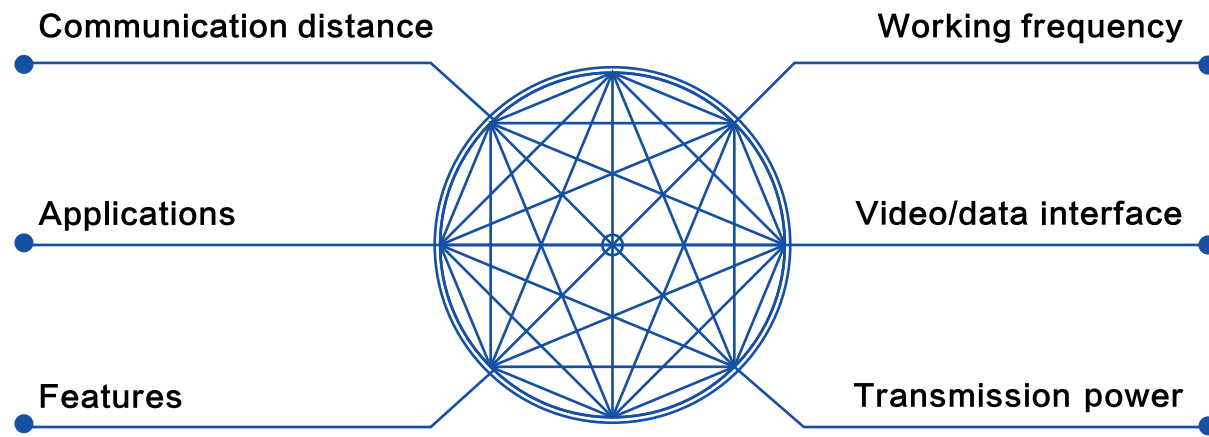


 **Wireless.
Fearless**

Taisync provides off-the-shelf and OEM integrated long-range **wireless data link** solutions to companies in the unmanned vehicle, security and broadcast spaces across the globe.



APPLICATION SCENARIO



Communication distance

Up to 200KM (LOS)

Working frequency

1.4GHz/2.4GHz/5.8GHz/2.4GHz & 5.8GHz dual / Sub-6GHz customizable

Video/data interface

ETH+HDMI dual / HDMI+AV dual / SDI+AV dual

Applications

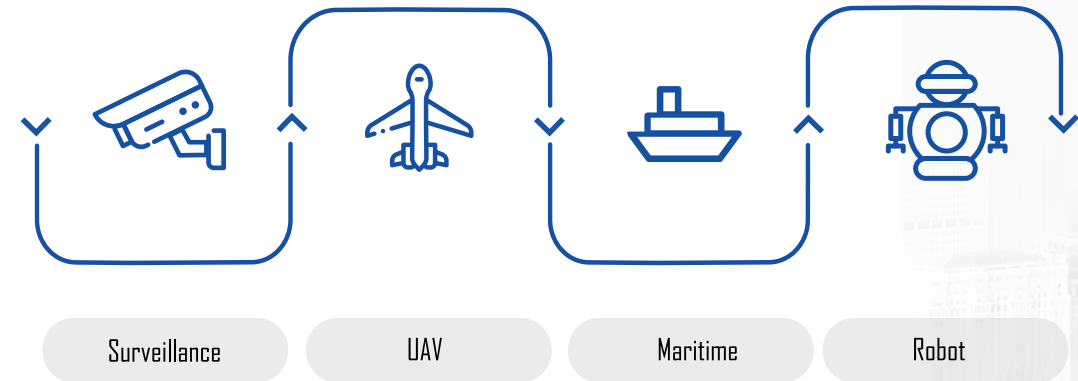
Point 2 point / point 2 multi point / multi point switching / relay (NLOS)

Features

- Automatic retransmission
- Antenna switch; Receiving diversity
- Adaptive modulation & coding scheme; Frequency hopping in operation

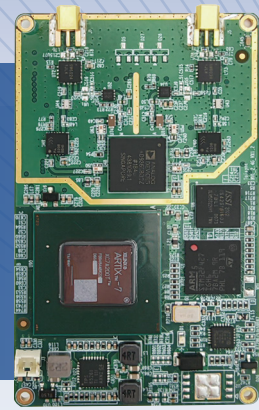
Transmission power

0.5W/1W/2W/5W/10W



Viulinx PRO-N

NDAA Compliant



Product Feature

- TDD bi-directional link with video/telemetry/RC
- Receiving diversity and dynamic antenna switching
- Low level re-transmission
- AES256 encryption
- Adaptive frequency hopping

Communication Distance



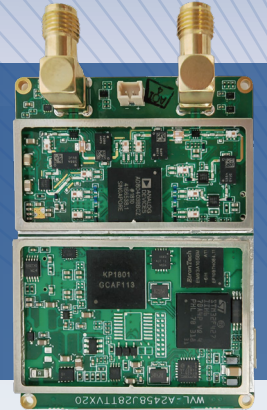
15km

Product Parameter

Parameter	Indicator
Frequency	2.4GHz
Bandwidth	10MHz
Power	27dBm
Modulation	OFDM
Constellation	BPSK, QPSK, 16QAM
FEC	LDPC (1/2, 2/3, 3/4, 5/6)
Duplex	TDD
Downlink throughput	2Mbps ~ 10Mbps
Uplink throughput	600kbps
Encryption	AES256
Interface	Ethernet*1, TTL*1, PPM/S.BUS*1
Weight	17g
Dimension	77.8×47.3mm
Rated voltage	DC 9V ~ 26V
Working temperature	-40°C ~ 60°C

Viulinx DUO-N

NDAA Compliant



Product Feature

- TDD bi-directional link with video/telemetry/RC
- Receiving diversity and dynamic antenna switching
- Low level re-transmission
- AES256 encryption
- Adaptive frequency hopping

Communication Distance



10km

Product Parameter

Parameter	Indicator
Frequency	2.4GHz/5GHz
Bandwidth	10MHz
Power	26dBm@2.4GHz; 24dBm@5GHz
Modulation	OFDM
Constellation	BPSK, QPSK, 16QAM
FEC	LDPC (1/2, 2/3, 3/4, 5/6)
Duplex	TDD
Downlink throughput	2Mbps ~ 10Mbps
Uplink throughput	600kbps
Encryption	AES256
Interface	Ethernet*1, Serial (TTL or RS232)*2, S.BUS*2, PPM*1
Weight	24g
Dimension	65×43mm
Rated voltage	DC 9V ~ 26V
Working temperature	-40°C ~ 60°C

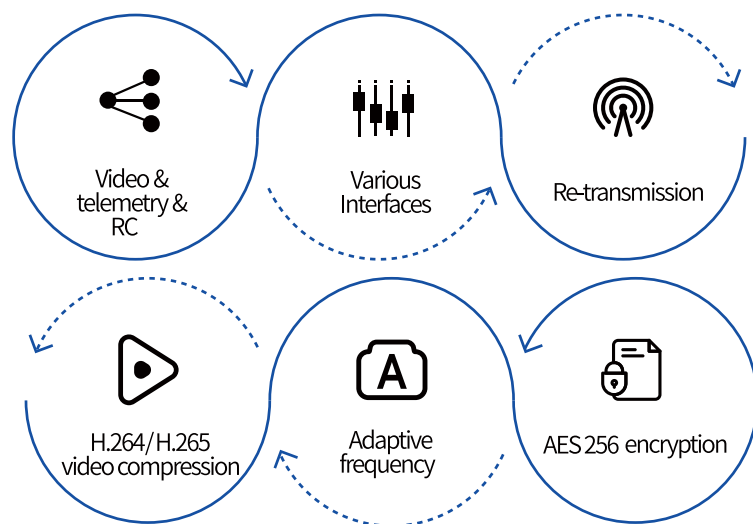
Viulinx PRO

BUILT WITH  ANALOG DEVICES



Product Features

- TDD bi-directional link with video/telemetry/RC
- Receiving diversity and dynamic antenna switching
- H.264 & H.265 video compression & decompression
- Low level re-transmission and adaptive frequency hopping
- AES256 encryption implemented on FPGA

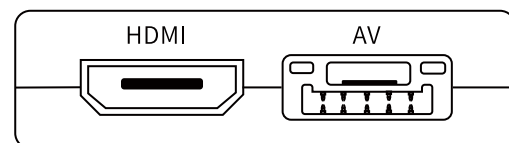
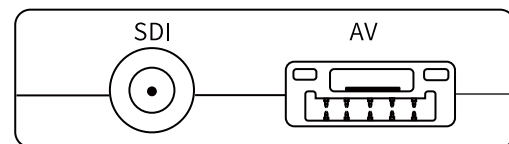
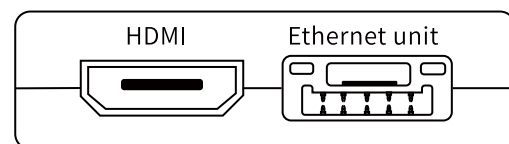
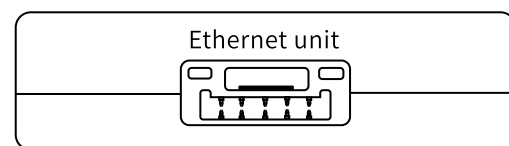


Model

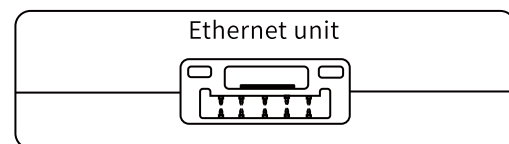
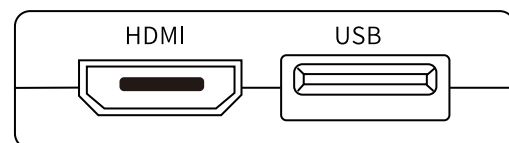
Model	Frequency	Transmission power
Viulinx Pro A200	2.4GHz	0.5W
Viulinx Pro A300	5.8GHz	0.5W
Viulinx Pro A501	1.4GHz	1W

Video Interfaces

Air 



Ground 



Communication Distance



7km-15km

30km-50km

15km-30km

Product Parameters

Parameter	Indicator
Frequency	1.4GHz/2.4GHz/5.8GHz
Bandwidth	10MHz
Transmission power	27dBm/30dBm
Modulation	OFDM
Constellation	BPSK, QPSK, 16QAM
FEC	LDPC (1/2, 2/3, 3/4, 5/6)
Duplex	TDD
Downlink throughput	2Mbps ~ 10Mbps
Uplink throughput	600kbps
Input voltage	DC 9V ~ 26V
Working temperature	-40°C ~ 60°C (ETH) / -10°C ~ 55°C (HDMI/SDI/AV)
Dimension	77.8X47.3X23.5mm (Ethernet unit) / 130X90X28.5mm (HDMI unit)
Weight	97g
Video interfaces	HDMI, SDI, AV, Ethernet
Other interfaces	Serial, PPM/S.BUS
Encryption	AES 256
Video format	AV: PAL 50i/NTSC 60i HDMI: 576i60, 480P@60fps, 720P@50fps, 720p@60fps 1080P@50fps, 1080P@60fps SDI: 720P@50fps, 720P@60fps, 1080P@50fps, 1080P@60fps
Video compression	H.264/H.265 (HDMI/SDI/AV)
Screen to screen latency	<300ms (related to cameras)

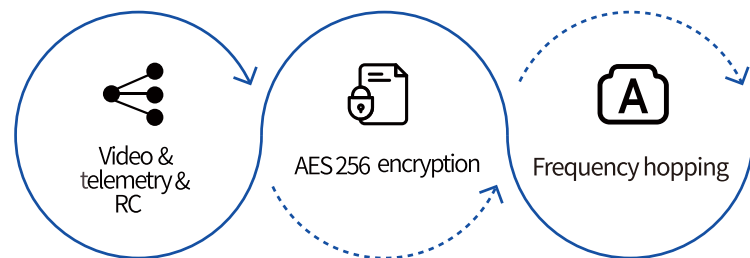
Viulinx PTMP

BUILT WITH  ANALOG DEVICES

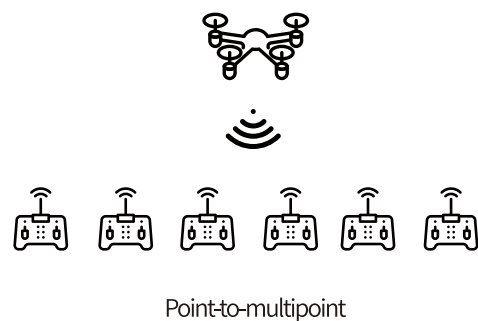
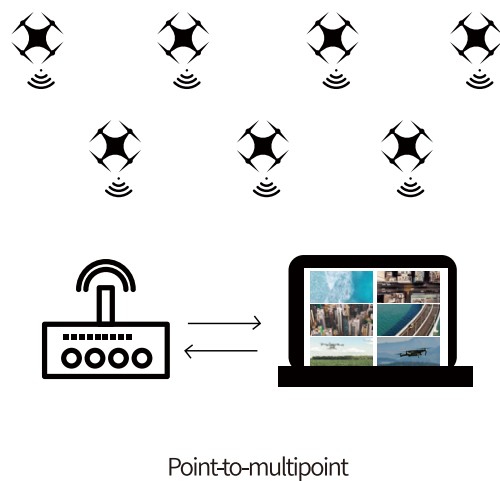


Product Features

- TDD bi-directional link with video/telemetry/RC
- Network topology: Star
- Up to 6 slave nodes
- Low level re-transmission and adaptive frequency hopping
- AES 256 encryption implemented on FPGA
- Robust NLOS performance

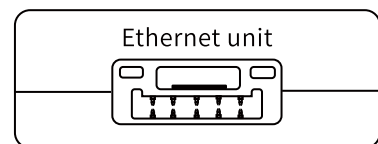


Application Mode

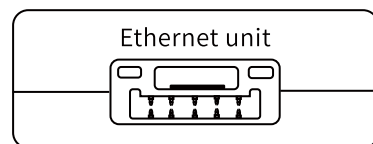


Video Interfaces

Air 



Ground 



Communication Distance



7km-50km
(related to node number)

Model

Model	Frequency	Transmission power
Viulinx Pro S100	1.4GHz	1W
Viulinx Pro S200	2.4GHz	0.5W
Viulinx Pro S300	5.8GHz	0.5W
Viulinx Fx S100	1.4GHz	2W
Viulinx Fx S200	2.4GHz	2W

Product Parameters

Parameter	Indicator
Frequency	1.4GHz/2.4GHz/5.8GHz
Bandwidth	10MHz/20MHz
Transmission power	27dBm/30dBm/33dBm
Modulation	OFDM
Constellation	BPSK, QPSK, 16QAM
FEC	LDPC (1/2, 2/3, 3/4, 5/6)
Duplex	TDD
Throughput	19Mbps (max)
Input voltage	DC 9V ~ 26V (PRO), 18V ~ 26V (FX)
Working temperature	-40°C ~ 60°C (ETH-ETH)
Dimension	77.8X47.3X23.5mm (PRO); 92.5X70.3X25mm (FX)
Weight	97g (PRO); 198g (FX)
Video interface	Ethernet
Other interfaces	Serial; S.BUS
Encryption	AES256
Network topology	Star
Node	1 master node, up to 6 slave nodes

Viulinx DUO

BUILT WITH  ANALOG DEVICES



Product Features

- Receiving diversity and dynamic antenna switching
- TDD bi-directional combo link for video, telemetry and RC
- Low level re-transmission; AES256 encryption
- Adaptive modulation & coding scheme

Communication Distance



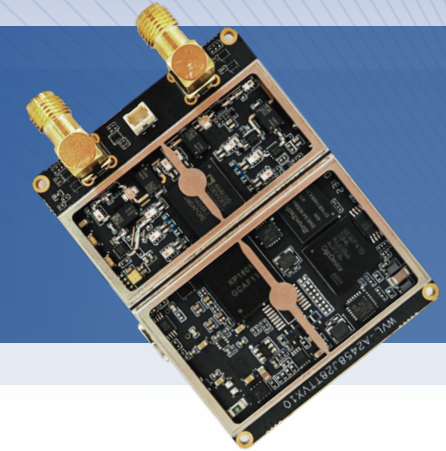
10km

Product Parameters

Parameter	Indicator
Frequency	2.4GHz/5.8GHz
Bandwidth	10MHz
Transmission power	26dBm@2.4GHz; 24dBm@5.8GHz
Modulation	OFDM
Constellation	BPSK, QPSK, 16QAM
FEC	LDPC (1/2, 2/3, 3/4, 5/6)
Duplex	TDD
Downlink throughput	2Mbps ~ 10Mbps
Uplink throughput	600kbps
Encryption	AES256
Serial baud rate	9600/57600/115200
Interfaces	Ethernet*1, Serial (TTL or RS232)*2, S.BUS*2, PPM*1
Weight	78g
Dimension	47X72X21mm
Input voltage	DC 9V ~ 26V
Working temperature	-40°C ~ 60°C

Viulinx DUO

BUILT WITH  ANALOG DEVICES



Product Features

- Receiving diversity and dynamic antenna switching
- TDD bi-directional combo link for video, telemetry and RC
- Low level re-transmission ; AES256 encryption
- Adaptive modulation & coding scheme

Communication Distance



10km

Product Parameters

Parameter	Indicator
Frequency	2.4GHz/5.8GHz
Bandwidth	10MHz
Transmission power	26dBm@2.4GHz; 24dBm@5.8GHz
Modulation	OFDM
Constellation	BPSK, QPSK, 16QAM
FEC	LDPC (1/2, 2/3, 3/4, 5/6)
Duplex	TDD
Downlink throughput	2Mbps ~ 10Mbps
Uplink throughput	600kbps
Encryption	AES256
Serial baud rate	9600/57600/115200
Interfaces	Ethernet*1, Serial (TTL or RS232)*2, S.BUS*2, PPM*1
Dimension	65X43mm
Input voltage	DC 9V ~ 26V
Working temperature	-40°C ~ 60°C

Viulinx FX 2W

BUILT WITH  ANALOG DEVICES



Product Features

- Receiving diversity and dynamic antenna switching
- Adaptive modulation & coding scheme
- Low level re-transmission and adaptive frequency hopping
- Super light, super small with high power

Communication Distance



50km

100km

Product Parameters

Parameter	Indicator
Frequency	1.4GHz
Bandwidth	10MHz
Transmission power	33dBm
Modulation	OFDM
Constellation	BPSK, QPSK, 16QAM
FEC	LDPC (1/2, 2/3, 3/4, 5/6)
Duplex	TDD
Throughput	2Mbps ~ 10Mbps (downlink); 600kbps (uplink)
Encryption	AES256
Interfaces	Ethernet*3, Serial*2, S.BUS*2, PPM*1, Power*1
Power consumption	18W (air unit); 10W (ground unit)
Latency	<300ms (camera dependent)
Weight	198g
Dimension	92.5 X70.3X25mm
Input voltage	DC 18V ~ 26V
Working temperature	-40°C ~ 60°C

Viulinx FX 5W

BUILT WITH  ANALOG DEVICES



Product Features

- TDD bi-directional link with video/telemetry/RC
- Receiving diversity and dynamic antenna switching
- Adaptive modulation & coding scheme
- Low level re-transmission and adaptive frequency hopping
- AES 256 encryption implemented on FPGA

Communication Distance



150km

Product Parameters

Parameter	Indicator
Frequency	1.4GHz
Bandwidth	10MHz
Transmission power	37dBm
Modulation	OFDM
Constellation	BPSK, QPSK, 16QAM
FEC	LDPC (1/2, 2/3, 3/4, 5/6)
Duplex	TDD
Downlink throughput	2Mbps ~ 10Mbps
Uplink throughput	600kbps
Input voltage	DC 18V ~ 26V
Working temperature	-40°C ~ 60°C
Dimension	176X139.3X27.8mm
Weight	668g
Interfaces	Ethernet*3, Serial*2, S.BUS*2, PPM*1, Power*1

Viulinx FX 10W

BUILT WITH  ANALOG DEVICES



Product Features

- TDD bi-directional link with video/telemetry/RC
- Receiving diversity and dynamic antenna switching
- Adaptive modulation & coding scheme
- Low level re-transmission and adaptive frequency hopping
- AES 256 encryption implemented on FPGA

Communication Distance



200km

Product Parameters

Parameter	Indicator
Frequency	1.4GHz
Bandwidth	10MHz
Transmission power	40dBm
Modulation	OFDM
Constellation	BPSK, QPSK, 16QAM
FEC	LDPC (1/2, 2/3, 3/4, 5/6)
Duplex	TDD
Downlink throughput	2Mbps ~ 10Mbps
Uplink throughput	600kbps
Input voltage	DC 18V ~ 26V
Working temperature	-40°C ~ 60°C
Dimension	176X139.3X27.8mm
Weight	668g
Interfaces	Ethernet*3, Serial*2, S.BUS*2, PPM*1, Power*1

ViuRC5



Product Features

- A daylight-readable, high-sensitivity, multi-touch display
- TDD bi-directional link with video/telemetry/RC
- Low level re-transmission and adaptive frequency hopping
- Adaptive modulation & coding scheme

Product Parameters

Parameter	Indicator
Working frequency	2.4GHz/5GHz
Transmission power	27dBm
ViuRC5 arg range	3.5KM
ViuRC5 pro range	10KM
Input voltage	6S~ 16S (air)
Channel	14
Display	5.5" LCD touch screen
Operating system	Android 9.0 2GRAM, 16G storage
Dimension	210 X 178 X 75mm (RC) 83 X 50 X 22.5 (air)
Weight	896g (RC), 41g (air)
Battery storage	7800mAh
Duration	6H
Interfaces	USB, TF, SIM (RC) ETH*2, TTL*2, S.BUS (air)
Working temperature	-10°C ~ 55°C
Camera view	FOV 120°

ViuRC7



Product Features

- A daylight-readable, high-sensitivity, multi-touch display
- TDD bi-directional link with video/telemetry/RC
- Externally accessible ports variety of Ethernet/HDMI/USB
- Capability of PTMP network topology

Product Parameters

Parameter	Indicator
Working frequency	2.4GHz/5GHz
Transmission power	26dBm@2.4GHz, 24dBm@5GHz
ViuRC7 pro range	20km+
Operation system	Android 9.0/11.0
Power consumption	12W
Storage capacity	4G + 64GB
Charging time	3.5 hours by 30W charger
Operation time	6 hours
Operation temperature	-20°C~55°C
Storage temperature	-20°C~65°C
Charging temperature	Room temperature
GNSS	GPS+GLONASS+Beidou
Wi-Fi protocol	802.11 a/b/g/n/ac
Wi-Fi operation frequency	2.4G/5G

Bluetooth protocol	BT2.1+EDR/3.0/4.1LE/4.2 BLE
Network topology	PTP, PTMP
Channel	21
Joy stick	*2
Dial	*2
Rocker switch	*2
5D button	*1
Push button	*12
Display	7" 1080P 1000nits LCD touch screen
Battery	Li-ion (10400mAh@7.2V)
Charging port	USB Type-C
Weight	1350g
Dimension	292X160X80mm
Interfaces	USB*2, micro SD*1, Ethernet*1, HDMI*1

ViuMesh Lite

BUILT WITH  ANALOG DEVICES



Product Features

Parameter	Indicator
Operational frequency	2412MHz ~ 2462MHz
Channel bandwidth	5/10/20MHz
Transmission power	0.5W*2
Modulation	OFDM
Antenna mode	MIMO
Anti-interference	CSMA/CA, STBC, LDPC
Moving speed	Max. 120km/h, ≤80km/h recommended
Constellation	BPSK/QPSK/16QAM/64QAM
Max. throughput	80Mbps
Max. Mesh node	42
Max. Node jump	8
Network transmission latency	Single node jump ≤30ms, 8 node jumps:600-4000ms
Network establishment time	16 nodes ≤40s
Network topology refresh time	1s ~ 30s
Network split-aggregation time	2s ~ 30s
IP data transmission	Layer2 transparent transmission
Data encryption	AES-CCMP
RF connector	MMCX
Interfaces	Ethernet, TTL, USB
Button	1*Reset button
Input voltage	DC 9V ~ 48V
Dimension	50X66X10mm
Operational temp	-20°C ~ +65°C
Weight	52g

ViuMesh Pro

BUILT WITH  ANALOG DEVICES



Product Features

- Security and confidentiality
- Anti-interference and anti-destruction
- Multi node flexible networking

Communication Distance



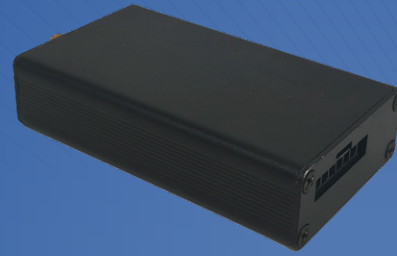
30km

Product Parameters

Parameter	Indicator
Frequency	1428MHz ~ 1448MHz
Bandwidth	5/10/20MHz
Transmission power	33dBm
Modulation	COFDM
Constellation	BPSK/QPSK/16QAM/64QAM
Maximum throughput	90Mbps@20MHz
Input voltage	DC 15V ~ 36V
Working temperature	-30°C ~ +65°C
Dimension	90.8X65X26.5mm
Weight	≤250g
Number of nodes	≥64 Nodes
Hops	>10 Hops
Network topology	Centerless network, star network, chain network, mesh network, etc
Encryption	AES128/AES256
Power consumption	≤30W
Interfaces	SMA-K×2, J30J (Power, ETH, TTL serial)
IP level	IP65

Viulinx A090W5

BUILT WITH  ANALOG DEVICES



Product Features

- Fast connection within 1second
- End-to-end transmission latency 2ms
- Wide input voltage range of DC 9V ~ 28V

Communication Distance



10~20km

Product Parameters

Parameter	Indicator
Frequency	902 ~ 928MHz/840MHz
Transmission power	500mW (27dBm)
Throughput	Max. 740kbps@1MHz, 370kbps@500kHz, 185kbps@250kHz, 92kbs@125kHz
Input voltage	DC 9V ~ 28V
TX current	720mA (Typ), 1000mA (Max)
RX current	170mA (Typ), 240mA (Max)
Sleeping current	40uA
Receiver sensitivity	-114dBm@125kHz, -111dBm@250kHz, -108dBm@500kHz, -105dBm@1MHz
Network	PTP, PTMP, MESH
Working temperature	-40°C ~ +85°C
Humidity	5% ~ 95%
RF connector impedance	50Ω
Dimension	88X45X18.7mm
Weight	75g
Antenna interface	SMA-F
Interface	MX3.0 43645, serial (RS232 or TTL)

Viulinx A0920W

BUILT WITH  ANALOG DEVICES



Product Features

- Fast connection within 1second
- End-to-end transmission latency 2ms
- Wide input voltage range of DC 15V ~ 28V

Communication Distance



100~200km

Product Parameters

Parameter	Indicator
Frequency	902 ~ 928MHz/840MHz
Transmission power	20W (43dBm)
Throughput	Max. 740kbps@1MHz, 370kbps@500kHz, 185kbps@250kHz, 92kbs@125kHz
Input voltage	DC 15V ~ 28V
Receiver sensitivity	-114dBm@125kHz, -111dBm@250kHz, -108dBm@500kHz, -105dBm@1MHz
Network	PTP, PTMP, MESH
Working temperature	-40°C ~ +85°C
Humidity	5% ~ 95%
RF connector impedance	50Ω
Dimension	105X60X20mm
Weight	136g
Antenna interface	SMA
Interface	J30J-15P

ViuTracker G1

BUILT WITH  ANALOG DEVICES



Product Features

- Smart-size and light-weight
- Real-time and high accuracy auto-tracking
- Compatibility with a wide variation of flight controllers
- Up to 3GHz frequency supported

Product Parameters

Parameter	Indicator
Yaw stability enhancement accuracy	<0.5°
Pitch stability enhancement accuracy	<0.1°
Yaw rotation range	Unlimited /450°
Pitch rotation range	-15°~135°
Maximum horizontal turning rate	300°/s
Maximum vertical turning rate	60°/s
Weight	2.6kg
Maximum torque	300 N.cm
Input voltage	DC 12V~15V
Average power consumption	15W
Working temperature	-20°C ~ 60°C
IP level	65
Working humidity	20% ~ 70%
Interface	TTL serial
Supported protocol	MavLink, NMEA-0183

ViuTracker G2

BUILT WITH  ANALOG DEVICES



Product Features

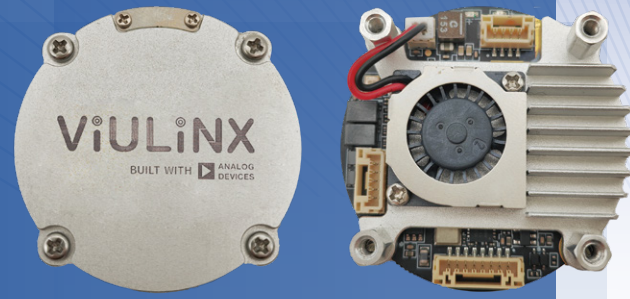
- Smart-size and light-weight
- Real-time and high accuracy auto-tracking
- Compatibility with a wide variation of flight controllers
- Up to 3GHz frequency supported

Product Parameters

Parameter	Indicator
Yaw stability enhancement accuracy	±0.1°
Pitch stability enhancement accuracy	±0.1°
Yaw rotation range	Unlimited/450°
Pitch rotation range	0°~90°
Maximum horizontal turning rate	20°/s
Maximum vertical turning rate	10°/s
Weight	6kg
Maximum torque	300 N.cm
Input voltage	DC 24V
Average power consumption	20W
Working temperature	-25°C ~ 55°C
IP level	66
Working humidity	20%~70%
Interface	RS232
Supported protocol	MavLink, NMEA-0183

Viulinx MINI

BUILT WITH  ANALOG DEVICES



Product Features

- TDD bi-directional link with video/telemetry/RC
- Receiving diversity and dynamic antenna switching
- AES 256 encryption

Communication Distance



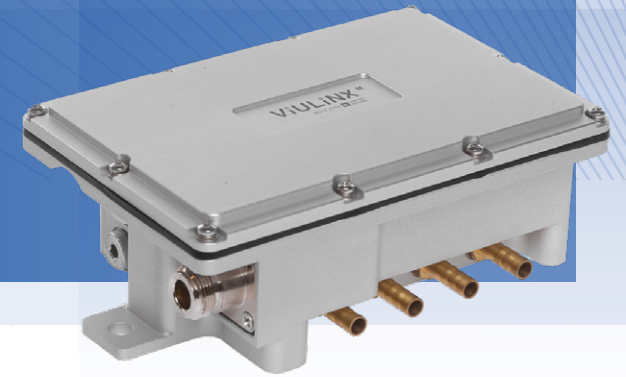
7km-15km

Product Parameters

Parameter	Indicator
Frequency	1.4GHz
Bandwidth	10MHz
Transmission power	27dBm
Modulation	OFDM
Constellation	BPSK, QPSK, 16QAM
FEC	LDPC (1/2, 2/3, 3/4, 5/6)
Duplex	TDD
Downlink throughput	2Mbps ~10Mbps
Uplink throughput	600kbps
Input voltage	DC 9V ~ 26V
Working temperature	-40°C ~ +60°C
Dimension	φ49×13mm
Weight	25g
Video interface	Ethernet
Other interfaces	TTL*2, S.bus*1
Encryption	AES256
Screen to screen latency	<300ms (related to cameras)

Viulinx M

BUILT WITH  ANALOG DEVICES



Product Features

- Design for unmanned surface vehicles
- TDD bi-directional link with video/telemetry/RC
- Adaptive modulation& coding scheme
- Low level re-transmission and adaptive frequency hopping
- AES 256 encryption implemented on FPGA

Communication Distance



5km

Product Parameters

Paramete	Indicator
Frequency	1.4GHz
Bandwidth	10MHz
Transmission power	33dBm
Modulation	OFDM
Constellation	BPSK, QPSK, 16QAM
FEC	LDPC (1/2, 2/3, 3/4, 5/6)
Duplex	TDD
Downlink throughput	2Mbps~10Mbps
Uplink throughput	600kbps
Input voltage	DC 16V~26V
Working temperature	-40°C~60°C
Dimension	150X100X54mm
Weight	1159g
Video interface	Ethernet
Other interfaces	Serial, PPM/S.BUS ,USB